



## Sand filters GRP

Manufacturer big pressure sand filters

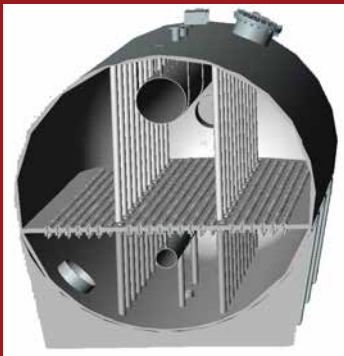
**Dimamex manufactures pressure sand filters** in fiberglass polyester reinforced. They are designed **to operate at pressures up to 10 bar**, which are ideal for those processes requiring a pretreatment filtration.



Interior Views



Filters tank Horizontal sand



**Up to 4000 mm in diameter and lengths exceeding 20 meters**

### Benefits

- Optimal for fluids in extreme environmental conditions.
- **Lightweight and easily transportable.**
- **Low thermal conductivity.**
- High durability and low maintenance.
- **Customization according to specifications and customer needs:** adaptation of connections, operating pressure, color and dimensions.
- Standard Compliance : EN-13121, BS-4994 y ASME X.
- Use of all types of resins: Orthophthalic, Isophthalic, bisphenol and Vinylester.

## Technical Features

- **Dimamex** recommends it for **mechanics filtrations with flint or multilayer with flint and anthracite.**
- **The bottom line** depends on the characteristics of **the fibers used, their combination and their orientation:**

	Resin orthophthalic	Resin Isophthalic	Resin Bisphenol	Resin Vinylester
Temperature Resistance	50° - 60°	55° - 75°	70° - 85°	80° - 120°
Tensile strength (MPa)	100	150	200	250
Flexural strength (MPa)	200	300	400	470
Impact Resistance (KJ/ m2 )	65	70	75	85
T <sup>a</sup> load (HDT) °C	> 80	> 90	> 120	> 180

### **75% Resistances of polyester reinforced fiberglass**

- Another important factor of polyester fiberglass reinforced is the **high temperatures resistance , both high and low (-30 to + 120 ° C) and low weight.**
- GRP pressurized filters of Dimamex **are the better option for the treatment of salt and brackish water** in desalination and purification process.
- The secret of success of our filters is **to combine and give coherence to the various fabrics and materials existing on the market**, which used accurately, allow us obtain a greater resistance to chemical and mechanical level.



**Filters tank Vertical sand**



**Filters tank Horizontal sand**